


prolis[®]
FTP Client
Version 4.0

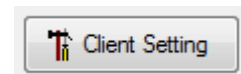
Prolis FTP Client

Prolis FTP Client is an automated software component responsible for downloading and uploading files from and to a FTP server in a non-secure as well as a secure mode. It is designed to execute iterations at the user defined intervals. In one iteration the component navigates through a user defined Origin directory at the user defined FTP server, collects all files and downloads them to the user defined destination directory at the client machine, in the first pass. It then enters the 2nd pass (if configured) to upload all files found in the user defined directory at the client machine, to the user defined directory at the FTP server.

Prolis FTP Client displays the whole activity including errors of each iteration, on the screen. This output log can be saved to a file if needed.

Operating Instructions

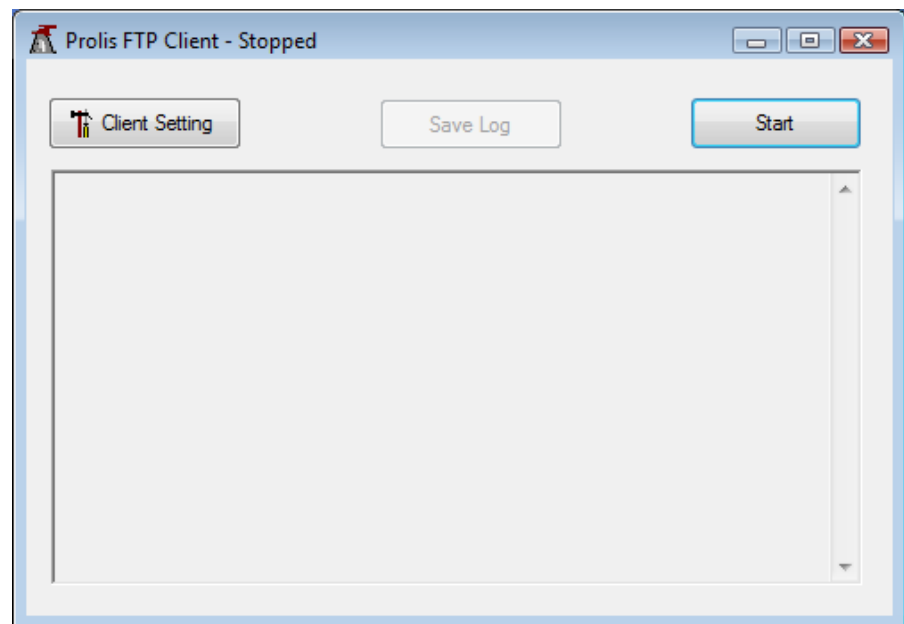
1. Double click the  icon found on the desk Top or in the Programs.
2. Click the 'Client Setting' button, on the appeared screen. This step is required when using the software very first time. (Setting Instructions on next page)
3. Click the 'Start' button.



Very first screen that appears upon starting the software.

If using the software very first time, click the left most button to access the setting screen, before clicking the 'Start' button.

Subsequent usage does not require any setting.



Client Setting

One needs to provide values for all parameters given on the setting screen, running the software. Missing or incorrect values of setting screen, will result to in to malfunction of the software and a lot of unpredictable errors appeared on the screen.

Iteration Intervals

You need to select one of many values. The default is 'Minute'. The selected value in the field multiplied by the Quantity, determines the Interval at which the Iteration will be triggered.

Iteration Interval

- Minute
- Hour
- Day
- Week
- Month

Quantity

Enter the quantity of the interval name selected. The default is '1' which means that the Iteration will be triggered after every minute. Entering the value of '30' means the Iteration will be triggered every half an hour.

Quantity

1

Client Setting

Iteration Interval	Quantity	Secure Connection
Minute	1	YES
FTP Server	User Name	Password (Case Sensitive)
0.0.0.0	username	XXXXX
<input checked="" type="checkbox"/> Download	<input type="checkbox"/> Upload	
Download		
Target Folder	Origin Folder	
D:\SMITH_MD\RESULTS\	/ABCGEFG/158228/Outgoing/	
Upload		
Target Folder	Origin Folder	
/5/XXXXXX/Incoming/	C:\HL7\Orders\	

Secure Connection

The setting determines the communication between the Server and the Prolis FTP Client is in plain text or encrypted.

Secure Connection

FTP Server

Enter either the name of the server (for example subDomain.Mydomain.com) or the public IP address Of the FTP server.

FTP Server

Login Credentials

User name and the password is Provided to you by the server Administrator. Enter the information appropriately.

User Name	Password (Case Sensitive)
<input type="text" value="username"/>	<input type="text" value="XXXXX"/>

Download

The download process Includes transferring files from the FTP server to the machine running the

Prolis FTP Client. These files are the lab order files if Prolis FTP Client is running within the laboratory network and files are the lab results files if Prolis FTP Client is running at the EMR location with the lab hosting the FTP server.

The 'Target Folder' address is the folder on the machine running Prolis FTP Client where downloaded files are paced. The 'Origin Folder' address is the folder on the FTP server from where Prolis FTP Client copies files to transfer those to the target. After successful download, the origin folder is emptied.

Download

Target Folder	Origin Folder
<input type="text" value="D:\SMITH_MD\RESULTS\"/>	<input type="text" value="/ABCGEFG/158228/Outgoing/"/>

Upload

The upload process Includes transferring files to the FTP server from the machine running the

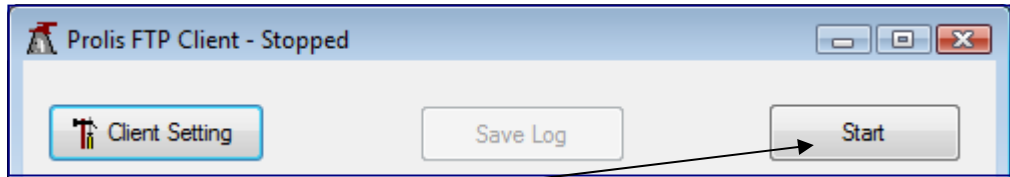
Prolis FTP Client. These files are the lab order files if Prolis FTP Client is running at the EMR network and files are the lab results files if Prolis FTP Client is running at the laboratory network.

The 'Target Folder' address is the folder on the FTP server where uploaded files are paced. The 'Origin Folder' address is the folder on the machine running Prolis FTP Client from where Prolis FTP Client copies files to transfer those to the target. After successful upload, the origin folder is emptied.

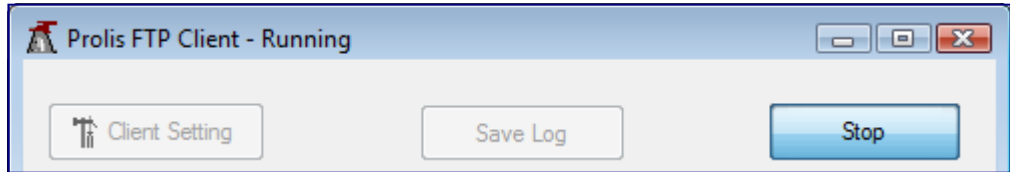
Upload

Target Folder	Origin Folder
<input type="text" value="/5/XXXXXX/Incoming/"/>	<input type="text" value="C:\HL7\Orders\"/>

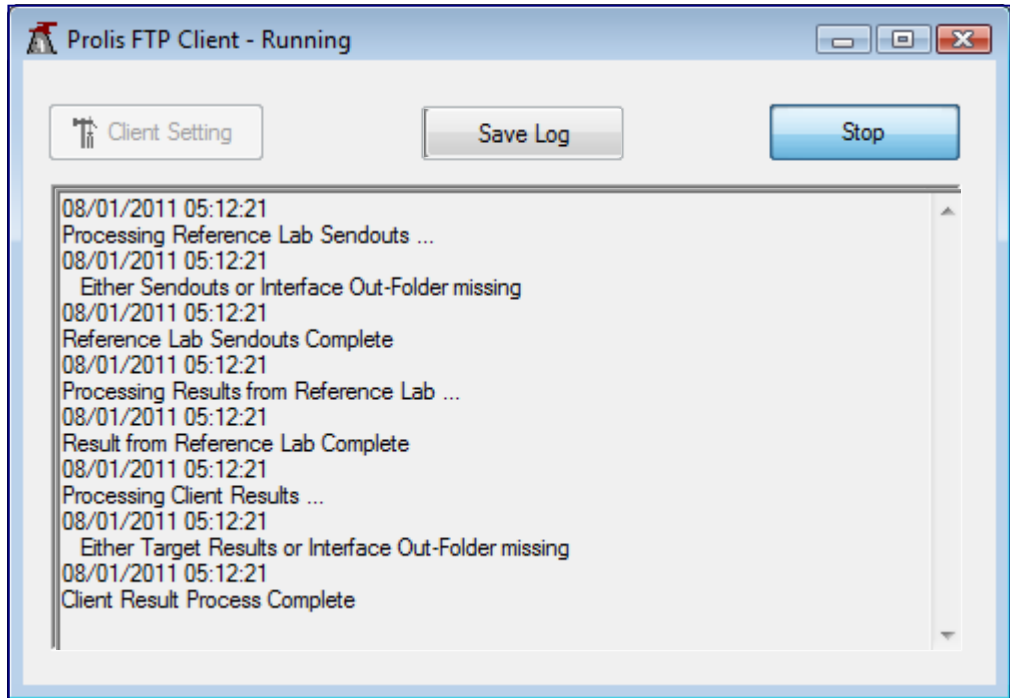
After entering all required information on the setting screen, click the start button on the main screen.



After clicking the Start button, the screen title says 'Running' and the button title says 'Stop'.



Prolis FTP Client starts displaying the activity and any error occurred right after it starts and it finds any file in the Origin folder. Any activity in the display area will enable the 'Save Log' button which can be clicked to save the log in to a text file.



To modify any Prolis FTP Client setting, the component must be stopped prior to click the 'Client Setting' button to enter in to the setting screen.

For any question, please email at support@prolis.info or open a ticket on our support site.